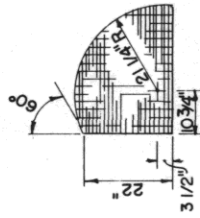
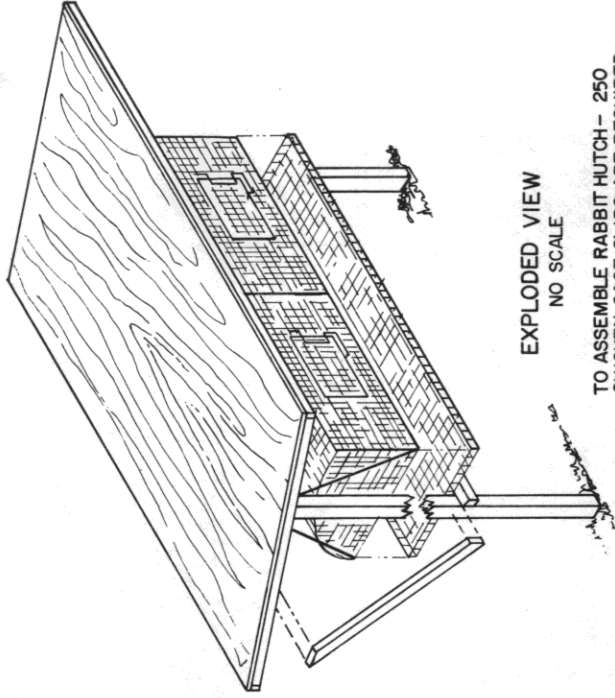


**WIRE MESH CUTTING DIAGRAM**  
 1-PIECE OF WELDED, 14 GAUGE GALVANIZED WIRE, 1" x 2" MESH, 6' WIDE AND 11'-4" LONG.

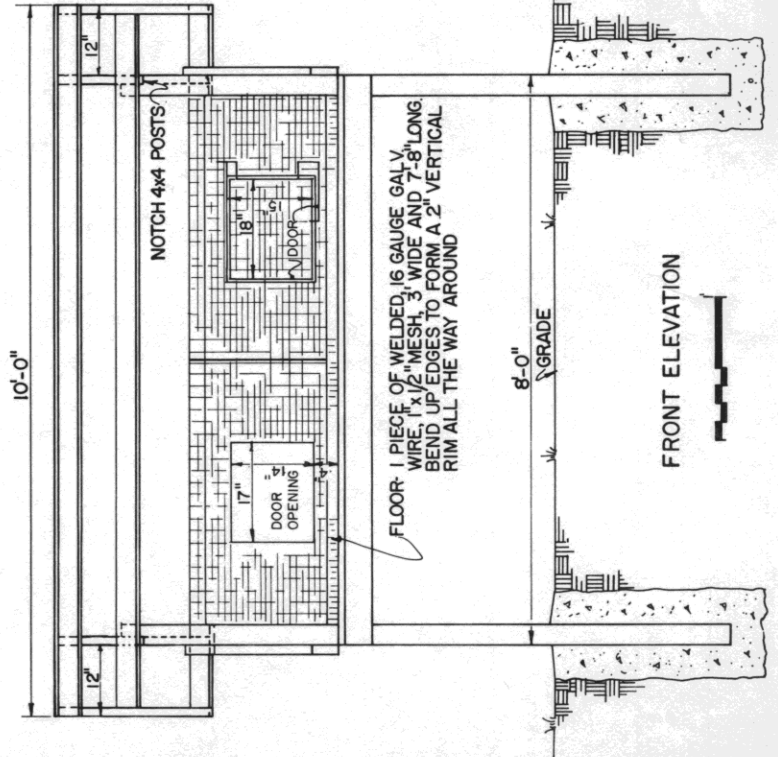


**PATTERN FOR SIDE OF CAGE AND CENTER PARTITION**

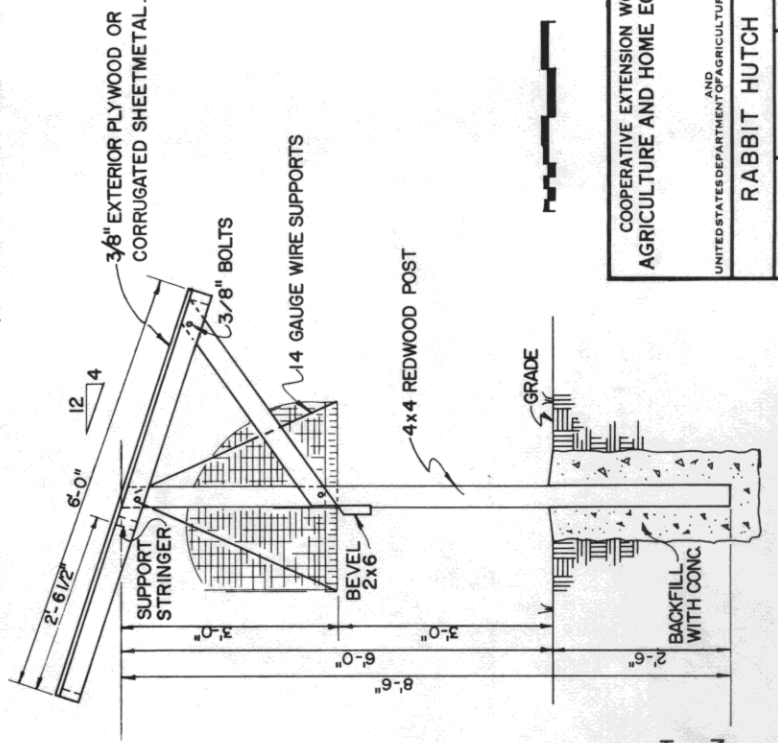


**EXPLODED VIEW**  
 NO SCALE

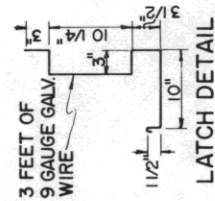
TO ASSEMBLE RABBIT HUTCH - 250 CHICKEN CAGE CLIPS ARE REQUIRED. (SPECIAL PLIERS ARE NEEDED TO APPLY THEM)



**FRONT ELEVATION**



**SIDE ELEVATION**



**LATCH DETAIL**

NOTE: CONSULT LOCAL HEALTH AND BUILDING CODE AUTHORITIES BEFORE STARTING CONSTRUCTION

COOPERATIVE EXTENSION WORK IN AGRICULTURE AND HOME ECONOMICS	
UNITED STATES DEPARTMENT OF AGRICULTURE COOPERATING	
RABBIT HUTCH	
CALIF. '77	SHEET 1 OF 1